

2513系列

■适用工况

适用于高粘性、雾化及干性介质的混合器、干燥器及反应器

■结构特点

侧部、顶部驱动
 双端面结构
 非平衡型密封
 介质侧主密封为静止式结构密封
 导流衬套结构
 集装箱式设计

■型号说明

2513 : 不带轴承结构

2513-B : 带轴承结构

■冲洗方案

需要 PLAN53 或 PLAN54 冲洗方案支持

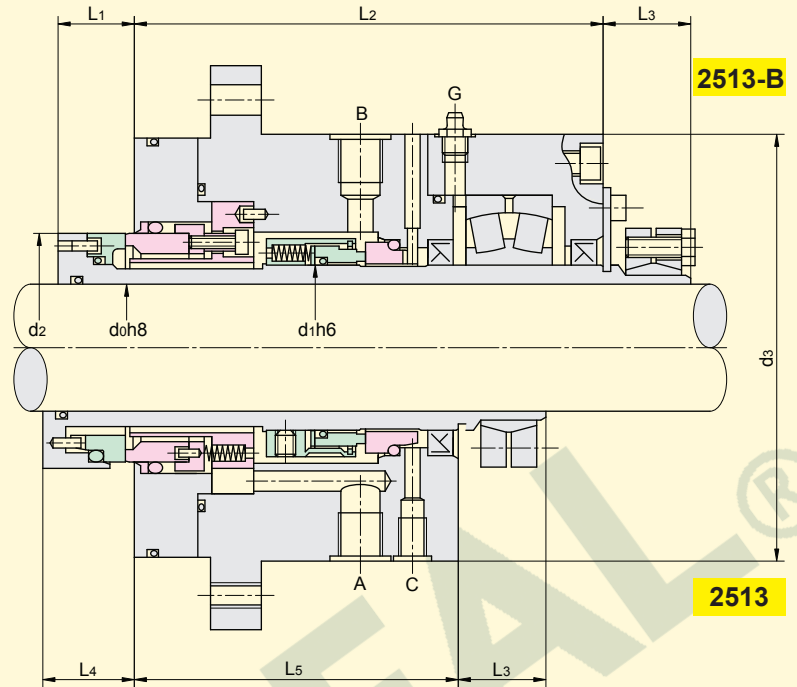
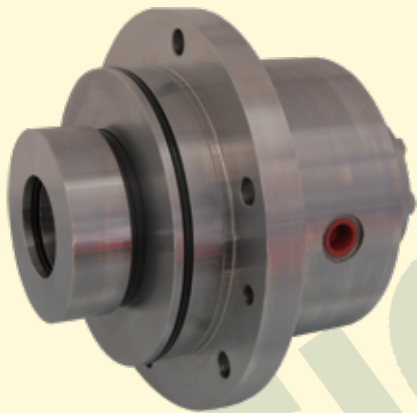
■结构应用

摩擦副匹配 (标配) : SiC × SiC+Carbon × SiC

其它金属 : 304、316

弹簧 : Hast - C4

密封圈 : FKM



A 缓冲液入口 Buffer fluid resp. quench IN
 B 缓冲液出口 Buffer fluid resp. quench OUT
 C 排液 Drainage
 G 润滑脂入口 Grease point

安装尺寸表

Size	d ₀	d ₁	d ₂	d ₃	L ₁	L ₂	L ₃	L ₄	L ₅	A, B	C
020	20.0	30.0	52.0	118.0	22.0	144.0	30.0	35.0	105.0	Rp3/8	Rp1/8
025	25.0	35.0	58.0	128.0	22.0	147.0	30.0	35.0	105.0	Rp3/8	Rp1/8
030	30.0	40.0	62.0	138.0	24.0	155.0	30.0	35.0	113.0	Rp3/8	Rp1/8
035	35.0	45.0	68.0	148.0	24.0	155.0	30.0	35.0	113.0	Rp3/8	Rp1/8
040	40.0	50.0	75.0	148.0	26.0	160.0	34.0	35.0	115.0	Rp3/8	Rp1/8
045	45.0	55.0	82.7	148.0	26.0	160.0	34.0	35.0	115.0	Rp3/8	Rp1/8
050	50.0	65.0	90.0	168.0	30.0	178.0	34.0	41.0	125.0	Rp3/8	Rp1/8
055	55.0	70.0	95.0	178.0	30.0	185.0	34.0	41.0	133.0	Rp3/8	Rp1/8
060	60.0	75.0	100.0	178.0	30.0	185.0	34.0	41.0	133.0	Rp3/8	Rp1/8
065	65.0	80.0	110.0	188.0	30.0	195.0	44.0	41.0	140.0	Rp3/8	Rp1/8
070	70.0	85.0	115.0	198.0	30.0	200.0	44.0	41.0	140.0	Rp3/8	Rp1/8
075	75.0	90.0	120.0	198.0	30.0	210.0	44.0	41.0	147.0	Rp3/8	Rp1/8
080	80.0	100.0	130.0	208.0	30.0	223.0	44.0	41.0	147.0	Rp1/2	Rp1/4
085	85.0	105.0	135.0	218.0	30.0	234.0	44.0	41.0	153.0	Rp1/2	Rp1/4
090	90.0	110.0	140.0	228.0	31.0	230.0	44.0	41.0	153.0	Rp1/2	Rp1/4
095	95.0	115.0	145.0	238.0	31.0	230.0	44.0	41.0	153.0	Rp1/2	Rp1/4
100	100.0	120.0	150.0	238.0	31.0	230.0	44.0	42.0	153.0	Rp1/2	Rp1/4
110	110.0	130.0	160.0	258.0	31.0	236.0	50.0	42.0	153.0	Rp1/2	Rp1/4
120	120.0	140.0	172.0	268.0	41.0	248.0	50.0	43.0	155.0	Rp1/2	Rp1/4
130	130.0	150.0	185.0	278.0	41.0	263.0	50.0	43.0	165.0	Rp1/2	Rp1/4
140	140.0	160.0	195.0	298.0	41.0	270.0	50.0	43.0	175.0	Rp1/2	Rp1/4
150	150.0	170.0	205.0	314.0	45.0	280.0	50.0	47.0	175.0	Rp1/2	Rp1/4
160	160.0	180.0	220.0	334.0	45.0	280.0	50.0	47.0	180.0	Rp1/2	Rp1/4
170	170.0	190.0	230.0	344.0	45.0	290.0	55.0	47.0	180.0	Rp1/2	Rp1/4
180	180.0	200.0	240.0	364.0	45.0	290.0	55.0	47.0	180.0	Rp1/2	Rp1/4
190	190.0	220.0	270.0	394.0	45.0	300.0	55.0	50.0	180.0	Rp1/2	Rp1/4
200	200.0	230.0	280.0	394.0	45.0	300.0	55.0	50.0	180.0	Rp1/2	Rp1/4

Applications

Designed for mixers, dryers and reactors for high viscosity, fogging and drying medium

Structure Features

Side and top drives
 Double seal
 Unbalanced
 The primary seal of medium side is static structure seal
 Guiding bushing structure
 Cartridge design

Type Descriptions

2513 : Without bearing

2513-B : With bearing

Flush Applications

Use PLAN 53 or PLAN 54

Materials

Seal face(standard) : SiC × SiC+Carbon × SiC

Other metals : 304, 316

Springs : Hast - C4

Seal ring : FKM

运行参数 Operating Parameters

温度 Temperature : - 20 to + 200

(- 4 F to + 392 F)

压力 Pressure : to 10bar

速度 Speed : to 10m/s