

## CJR40系列

### ■适用工况

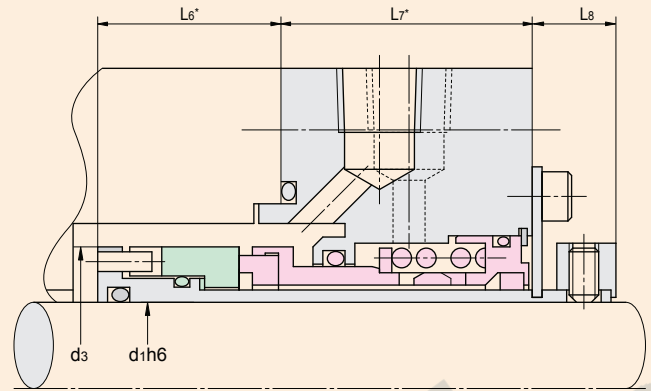
适用于轴向窜量较大的操作环境

### ■结构特点

- 单端面结构
- 平衡型设计
- 无旋向要求
- 圆柱螺旋单弹簧设计
- 静止型结构设计
- 弹簧与介质隔离
- 具有好的轴向补偿能力
- 对气蚀现象有较好的适应能力
- 集成式设计

### ■结构材料

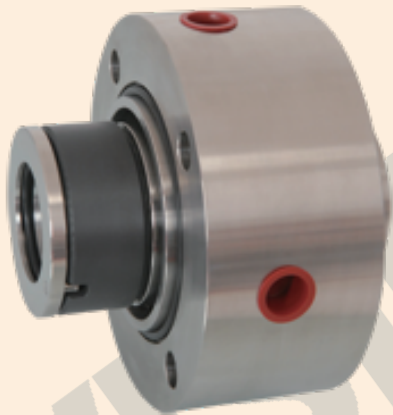
- 摩擦副匹配
- CJR406 : SiC × Carbon
- CJR4010 : SiC × WC
- 过流金属 : 304、316
- 弹簧 : 316
- 密封圈 : FKM、NBR、MVQ、KALREZ®



安装尺寸表

Size	d1max	d3	L6	L7	L8	mm
030	25.0	47.5	17.0	68.0	20.0	
035	30.0	52.5	17.0	71.0	20.0	
040	35.0	57.5	17.0	75.0	20.0	
045	40.0	63.5	19.0	81.0	20.0	
050	45.0	70.0	19.0	81.0	20.0	
055	50.0	75.0	16.5	88.0	22.5	
060	55.0	80.5	16.5	89.0	22.5	
065	60.0	86.0	16.5	96.0	22.5	
070	65.0	91.5	17.5	97.0	22.5	
075	70.0	96.5	17.5	97.0	22.5	
080	75.0	102.0	15.5	105.0	24.5	
085	80.0	107.5	16.5	105.0	24.5	
090	85.0	112.5	16.5	109.0	24.5	
095	90.0	117.5	16.5	109.0	24.5	
100	95.0	123.0	16.5	109.0	24.5	

“\*”为参考尺寸 is reference value



### Applications

Designed for working environment with bigger axial movement

### Structure Features

- Single seal
- Balanced
- Independent of direction of rotation
- Single cylinder spring
- Stationary seal
- Spring is separate with medium
- Good axial compensation ability
- Good adaptability of cavitation
- Cartridge design

### Materials

- Seal face :  
CJR406 : SiC × Carbon  
CJR4010 : SiC × WC
- Metal parts : 304,316
- Spring : 316
- Seal ring : FKM,NBR,MVQ,KALREZ®

### 运行参数 Operating Parameters

- 温度 Temperature : -40 to + 260  
(-40 F to + 500 F)
- 压力 Pressure : to 25bar
- 速度 Speed : to 35m/s