

ST100供给罐

应用工况

炼油、石油、化工、管道输送等行业
用于为缓冲液或隔离液提供储存及保压，实现PLAN52和PLAN53

结构特点

为平封头焊接设计，焊接符合ANSI标准VIII部分
可作为独立的储液罐或整体系统使用
带有监视液位的视窗

有换热及非换热结构可供选择

800等级排气阀及排水阀

多位截止阀和排放阀

型号说明

ST100 : 换热型，带螺旋换热管

ST100-A : 非换热型，不带螺旋换热管

选择配置

适合PLAN 52的节流组件或法兰

适合PLAN53的压力调校装置

压力表

温度表

压力开关或变送器

液位开关或变送器

手动补液泵（不固定在本体上）

安装支架

法兰连接

结构材料

封头、壳体及所有焊接件：碳钢、304、316

螺旋冷却管：304、316

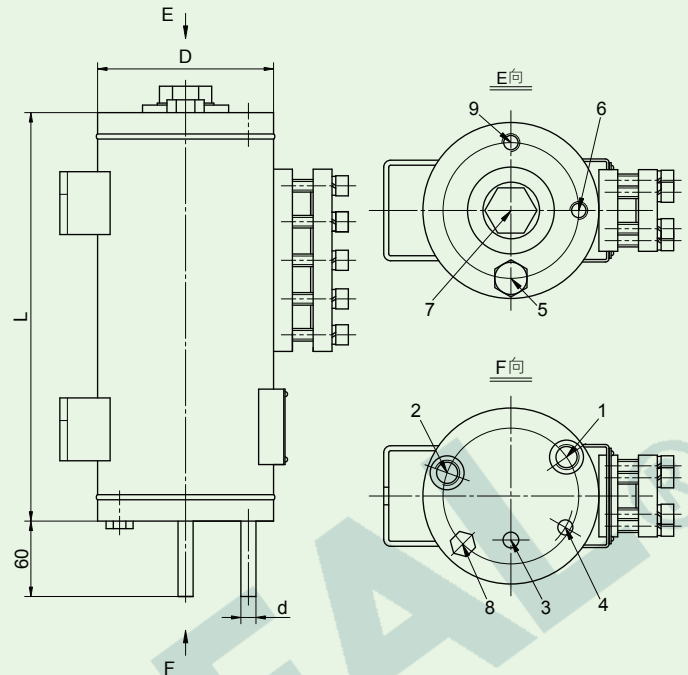


Applications

Designed for refinery, petroleum, chemical, pipeline etc. Used to reserve buffer or segregating liquid and realize pressure maintaining. Use PLAN52 and PLAN 53

Structure Features

Flat-head welding design in accordance with ANSI VIII
Can be furnished as a bare reservoir or as a complete system
Furnished with sight window to see level
Heat exchanging or non-heat exchanging structure
Class 800 vent valve or drain valve
Multi-port block & bleed valve



- | | |
|-------------------|--|
| 1. 密封液进口Rp1/2(BI) | Buffer fluid IN Rp1/2(BI) |
| 2. 密封液出口Rp1/2(BO) | Buffer fluid OUT Rp1/2(BO) |
| 3. 冷却水进口(CI) | Cooling water IN (CI) |
| 4. 冷却水出口(CO) | Cooling water OUT(CO) |
| 5. 密封液进出口Rp1/2 | Filling connection with plug Rp1/2 |
| 6. 压力气体接口Rc1/4 | Pressure gas connection Rc1/4 |
| 7. 液位开关连接口Rp2(LS) | Connection for level switch or level indicator Rp2(LS) |
| 8. 密封液补充口Rp1/8 | Connection for refill unit Rp1/8 |
| 9. 压力表连接口Rc1/4 | Connection for pressure gauge Rc1/4 |

参数表

型号	技术参数			结构尺寸 (mm)		
	容积	压力	操作温度	D	L	d
ST101	4L	16bar	-40 to +260 (-40 F to +500 F)	140	325	12
ST102	8L			168	495	15
ST103	12L			168	700	15
ST104	16L			168	905	15
ST105	20L			168	1110	15

Type Descriptions

ST100 : Heat exchanging with cooling coil

ST100-A : Non-heat exchanging, without cooling coil

Options

Orifice or flange for PLAN 52

Pressure regulator package for PLAN 53

Pressure gauge

Thermometer

Pressure switch or transmitter

Level switch or transmitter

Hand refill pump(Not be fixed)

Mounting stand

Flange connection

Materials

Flat head, shell and all the welding parts: carbon steel, 304, 316

Cooling coil : 304, 316