

D525系列

应用工况

适用于密封操作压力不稳定及真空环境下的危险介质

结构特点

有压双端面密封，同向排布

主、次级密封均为平衡型密封，其中主密封为反压设计的旋转型密封，次级密封自身提供隔离液循环的动力来源

主、次密封采用“T7”及“HA”结构环作为各自静环的标准配置

符合 EN 12756、ISO3069 标准

通常为集装箱式设计，其型号为 CD525

冲洗应用

需要 PLAN 53 或 PLAN54 冲洗方案支持

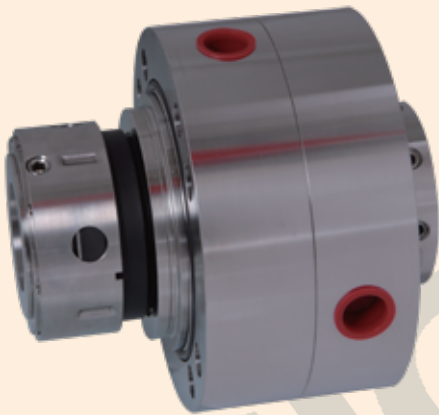
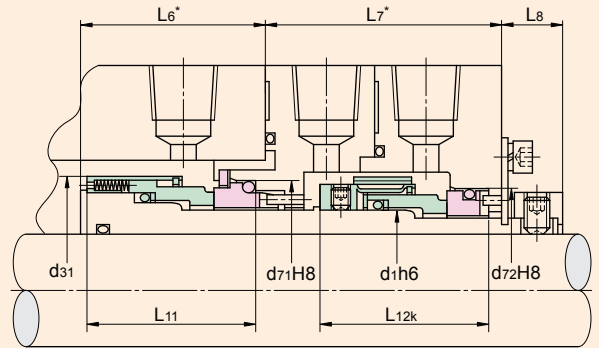
结构材料

摩擦副匹配：Carbon x SiC/WC+ Carbon x SiC

过流金属：304、316

弹簧：316、Hast-C4

密封圈：NBR、FKM



安装尺寸表

	mm									
Size	d ₁	d ₃₁	d ₇₁	d ₇₂	L ₆	L ₇	L ₈	L ₁₁	L _{12k}	
030	30.0	56.0	50.0	45.0	54.0	73.5	18.0	50.0	50.0	
033	33.0	59.0	56.0	48.0	53.0	74.5	18.0	52.5	50.0	
035	35.0	61.0	58.0	50.0	53.0	74.5	18.0	52.5	50.0	
038	38.0	64.0	61.0	56.0	54.5	75.5	18.0	52.5	52.5	
040	40.0	66.0	63.0	58.0	54.5	75.5	18.0	52.5	52.5	
043	43.0	69.0	66.0	61.0	54.5	75.5	18.0	52.5	52.5	
045	45.0	71.0	70.0	63.0	59.5	75.5	18.0	57.5	52.5	
048	48.0	78.0	73.0	66.0	57.0	78.0	18.0	57.5	52.5	
050	50.0	80.0	75.0	70.0	58.0	82.0	18.0	57.5	57.5	
053	53.0	83.0	78.0	73.0	62.0	83.0	21.0	62.5	57.5	
055	55.0	85.0	80.0	75.0	62.0	83.0	21.0	62.5	57.5	
058	58.0	88.0	83.0	78.0	64.0	86.0	21.0	62.5	62.5	
060	60.0	90.0	85.0	80.0	64.0	86.0	21.0	62.5	62.5	
065	65.0	95.0	92.0	85.0	71.5	86.0	21.0	70.0	62.5	
070	70.0	104.0	97.0	92.0	71.5	93.5	21.0	70.0	70.0	
075	75.0	109.0	105.0	97.0	72.0	93.0	21.0	70.0	70.0	
080	80.0	114.0	110.0	105.0	77.0	93.0	22.0	75.0	70.0	
085	85.0	119.0	115.0	110.0	77.0	98.0	22.0	75.0	75.0	
090	90.0	124.0	120.0	115.0	77.0	98.0	22.0	75.0	75.0	
095	95.0	129.0	125.0	120.0	77.0	98.0	22.0	75.0	75.0	

“*”为参考尺寸 is reference value

Applications

Designed for dangerous medium in unstable operating pressure and vacuum circumstances

Structure Features

Pressurized double seal, isodirectional arrangement

Primary and secondary seal are all balanced seals. Primary seal is rotary seal which adopts converse pressure design

Secondary seal has the capacity of self recirculating sealing segregating liquid

Primary and secondary seal adopt “T7” and “HA” structure rings as respective standard stationary seats

In accordance with EN 12756, ISO3069

Usually use cartridge design as CD525

Flush Applications

Normally use PLAN 53 or PLAN 54

Materials

Seal face : Carbon x SiC/WC+ Carbon x SiC

Metal parts : 304, 316

Springs : 316, Hast-C4

Seal ring : NBR, FKM

运行参数 Operating Parameters

温度 Temperature : - 40 to + 200
(- 40 F to + 392 F)

压力 Pressure : to 40bar

速度 Speed : to 25m/s