

D513系列

■应用工况

适用于易气蚀及高压的环境工况

■结构特点

无压双端面密封，同向排布

主密封为静止平衡型密封，次密封为非平衡型密封

次级密封自身提供缓冲液循环的动力来源

次级密封采用“HA”结构环作为静环的标准配置

通常为集装式设计，其型号为CD513

■冲洗应用

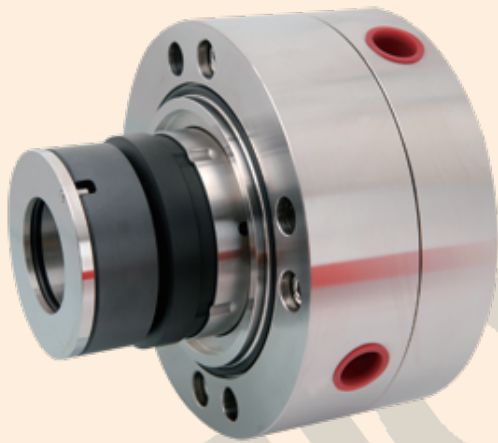
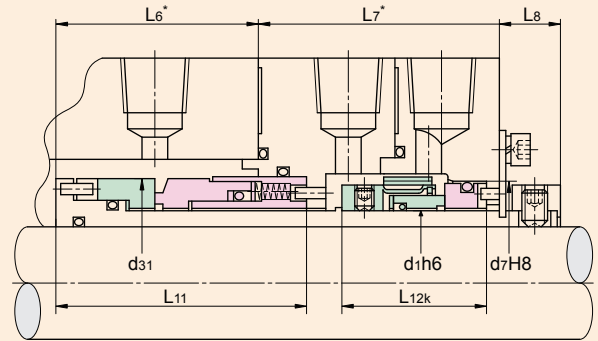
需要PLAN 52冲洗方案支持

■结构材料

摩擦环匹配：SiC × Carbon+ Carbon × SiC

过流金属：304、316

密封圈：NBR、FKM



安装尺寸表

Size	d ₁	d ₃₁	d ₇	L ₆	L ₇	L ₈	L ₁₁	L _{12k}	mm
035	35.0	52.5	50.0	56.0	72.5	18.0	70.9	42.5	
038	38.0	55.5	56.0	56.0	75.0	18.0	70.9	45.0	
040	40.0	57.5	58.0	56.0	75.0	18.0	70.9	45.0	
043	43.0	61.5	61.0	63.0	75.0	18.0	78.0	45.0	
045	45.0	63.5	63.0	63.0	75.0	18.0	78.0	45.0	
048	48.0	68.0	66.0	63.0	75.0	18.0	78.0	45.0	
050	50.0	70.0	70.0	63.0	77.5	18.0	78.0	47.5	
053	53.0	73.0	73.0	63.0	77.5	21.0	78.0	47.5	
055	55.0	75.0	75.0	63.0	77.5	21.0	78.0	47.5	
058	58.0	78.5	78.0	63.5	82.5	21.0	78.3	52.5	
060	60.0	80.5	80.0	63.5	82.5	21.0	78.3	52.5	
065	65.0	86.0	85.0	63.5	82.5	21.0	78.3	52.5	
070	70.0	91.5	92.0	64.5	90.0	21.0	79.5	60.0	
075	75.0	96.5	97.0	64.5	90.0	21.0	79.5	60.0	
080	80.0	102.0	105.0	64.5	90.0	22.0	79.5	60.0	
085	85.0	107.5	110.0	65.5	90.0	22.0	80.5	60.0	
090	90.0	112.5	115.0	65.5	95.0	22.0	80.5	65.0	
095	95.0	117.5	120.0	65.5	95.0	22.0	80.5	65.0	
100	100.0	123.0	125.0	65.5	95.0	22.0	80.5	65.0	

“*”为参考尺寸 is reference value

Applications

Designed for cavitation and high pressure working condition

Structure Features

Pressureless double seal, isodirectional arrangement

Primary seal is balanced stationary seal ; secondary seal is unbalanced seal with self - provided drive resource of buffer fluid circulation

Secondary seal take “ HA ”ring as their standard configuration of stationary seat

Usually provide cartridge design as CD513

Flush Applications

Use PLAN52

Materials

Seal face :

SiC/WC × Carbon+ Carbon × SiC

Metal parts : 304,316

Springs : 316,Hast - C4

Seal ring : NBR,FKM

运行参数 Operating Parameters

温度 Temperature : - 40 to + 200

(- 40 ℉ to + 392 ℉)

压力 Pressure : to 60bar

速度 Speed : to 25m/s