

M60系列

■适用工况

适用于类如原油、沥青等高粘度介质

■结构特点

- 旋转的金属波纹管设计
- 具有好的追随性及补偿性
- 自身有良好的平衡性
- 具有自身清洗功能
- 波纹管内孔45°角设计
- 拨叉式扭矩传动结构
- 符合API682 B类技术规范
- “T₁”型结构环作为静环的唯一配置

■结构材料

摩擦副匹配：

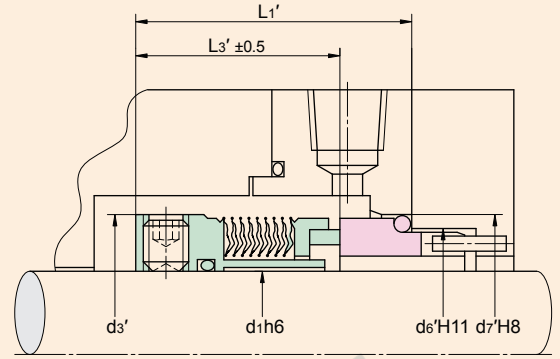
M602：Carbon × SiC/WC

M603：SiC/WC × SiC/WC

波纹管：316L、AM350、Hast-C276

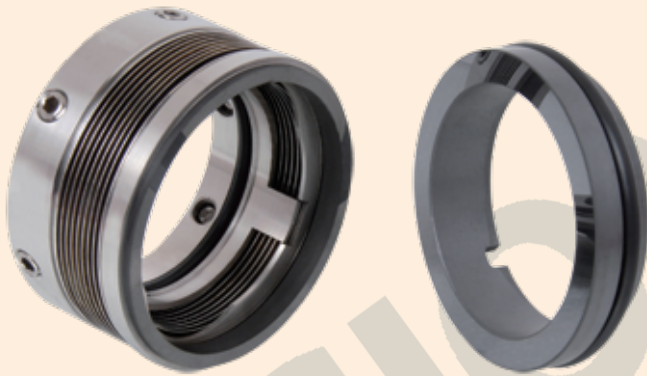
其它过流金属：304、316、316L、Hast-C276

密封圈：NBR、FKM、MVQ、KALREZ®



安装尺寸表

Size	d ₁	d ₃ '	d ₆ '	d ₇ '	L ₃ '	L ₁ '	mm
018	18.0	36.5	31.0	37.0	30.5	37.5	
020	20.0	39.6	34.0	40.0	28.5	40.0	
022	22.0	42.8	37.0	43.0	31.0	42.5	
024	24.0	42.8	37.0	43.0	31.0	42.5	
025	25.0	44.0	39.0	45.0	31.0	42.5	
028	28.0	47.0	42.0	48.0	31.0	42.5	
030	30.0	49.2	44.0	50.0	31.0	42.5	
032	32.0	52.4	49.0	56.0	31.0	45.0	
033	33.0	52.4	49.0	56.0	31.0	45.0	
035	35.0	55.5	51.0	58.0	31.0	45.0	
038	38.0	58.0	54.0	61.0	31.0	45.0	
040	40.0	58.7	56.0	63.0	31.0	45.0	
043	43.0	61.9	59.0	66.0	31.0	45.0	
045	45.0	65.1	62.0	70.0	32.5	47.5	
048	48.0	68.2	65.0	73.0	32.5	47.5	
050	50.0	71.0	67.0	75.0	32.5	47.5	
053	53.0	73.0	70.0	78.0	37.5	52.5	
055	55.0	74.6	72.0	80.0	37.5	52.5	
058	58.0	79.0	75.0	83.0	37.5	52.5	
060	60.0	84.1	77.0	85.0	37.5	52.5	
063	63.0	87.3	81.0	90.0	34.5	52.5	
065	65.0	87.3	83.0	92.0	42.0	60.0	
068	68.0	95.3	88.0	97.0	42.0	60.0	
070	70.0	95.3	88.0	97.0	42.0	60.0	
075	75.0	98.4	95.0	105.0	41.8	60.0	
080	80.0	104.8	100.0	110.0	41.8	60.0	
085	85.0	111.1	105.0	115.0	46.8	65.0	
090	90.0	114.3	110.0	120.0	47.8	65.0	
095	95.0	120.7	115.0	125.0	47.8	65.0	



Applications

Designed for media with high viscosity such as crude oil and asphaltum

Structure Features

- Rotary metal bellows
- Good following and compensatory performance
- Good self balance performance
- Self-flushing function
- 45° inner diameter of bellows
- Fork type torque driving
- In accordance with technical specification of API682 B
- Type “T₁” is the only option of stationary seat

Materials

- Seal face：
 - M602：Carbon × SiC/WC
 - M603：SiC/WC × SiC/WC
- Bellows：316L,AM350,HAST-C276
- Other metal parts：304,316,316L,Hast-C276
- Seal ring：NBR,FKM,MVQ,KALREZ®

运行参数 Operating Parameters

- 温度 Temperature：-75 to +260
(-100 ℉ to +500 ℉)
- 压力 Pressure：单层 Single：to 25bar
双层 Double-ply：to 40bar
- 速度 Speed：to 25m/s