

CR50系列

■适用工况

应用于高速、高压、润滑性较好的介质工况

■结构特点

- 单端面结构
- 平衡型设计
- 静止型结构
- 多弹簧结构设计
- 坚固的SSiC整体旋转环
- 集装式设计

■冲洗应用

通常需要PLAN11、21、32等冲洗方案的支持

■结构材料

摩擦副匹配：

CR501：SSiC × SSiC

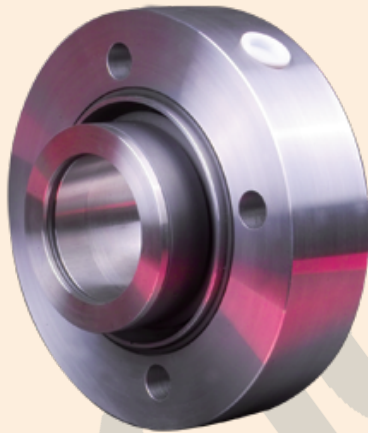
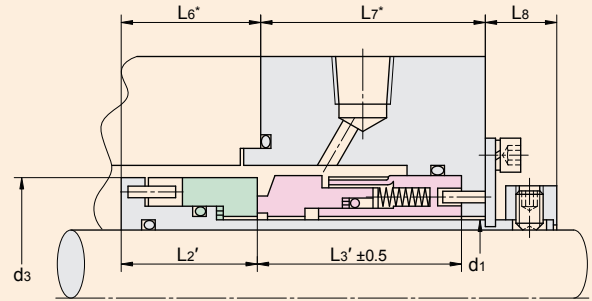
CR508：SSiC × Carbon

过流金属：304、316

弹簧：316、Hast-C4

密封圈：NBR、FKM、MVQ

密封垫：PTFE



安装尺寸表

Size	d1	d3	L2'	L3'	L6	L7	L8	mm
030	30.0	47.5	28.7	42.2	28.9	47.0	18.0	
033	33.0	51.5	28.7	42.2	28.9	47.0	18.0	
035	35.0	52.5	28.7	42.2	28.9	47.0	18.0	
038	38.0	55.5	28.7	42.2	28.9	47.0	18.0	
040	40.0	57.5	28.7	42.2	28.9	47.0	18.0	
043	43.0	61.5	30.8	47.2	31.0	52.0	18.0	
045	45.0	63.5	30.8	47.2	31.0	52.0	18.0	
048	48.0	68.0	30.8	47.2	31.0	52.0	18.0	
050	50.0	70.0	30.8	47.2	31.0	52.0	18.0	
053	53.0	73.0	30.8	47.2	31.0	52.0	21.0	
055	55.0	75.0	30.8	47.2	31.0	52.0	21.0	
058	58.0	78.5	30.8	47.5	30.3	53.0	21.0	
060	60.0	80.5	30.8	47.5	30.3	53.0	21.0	
063	63.0	84.0	30.8	47.5	30.3	53.0	21.0	
065	65.0	86.0	30.8	47.5	30.3	53.0	21.0	
070	70.0	91.5	32.0	47.5	31.5	53.0	21.0	
075	75.0	96.5	32.0	47.5	31.5	53.0	21.0	
080	80.0	102.0	32.0	47.5	31.5	53.0	23.0	
085	85.0	107.5	33.0	47.5	32.5	53.0	23.0	
090	90.0	112.5	33.0	47.5	32.5	53.0	23.0	
095	95.0	117.5	33.0	47.5	32.5	53.0	23.0	
100	100.0	123.0	33.0	47.5	32.5	53.0	23.0	
105	105.0	128.5	33.0	47.5	32.5	53.0	23.0	
110	110.0	133.5	33.0	47.5	32.5	53.0	23.0	
115	115.0	139.0	33.0	47.5	32.5	53.0	23.0	
120	120.0	144.0	33.0	49.7	32.7	55.0	23.0	
125	125.0	150.0	34.0	49.7	33.7	55.0	23.0	
130	130.0	155.0	34.0	49.7	33.7	55.0	23.0	
135	135.0	160.0	34.0	49.7	33.7	55.0	23.0	
140	140.0	165.0	34.0	49.7	33.7	55.0	23.0	

"*" 为参考尺寸 is reference value

运行参数 Operating Parameters

温度 Temperature : -40 to +220
(-40 F to +428 F)

压力 Pressure : to 80bar

速度 Speed : to 50m/s

Applications

Designed for media with high speed, high pressure and good lubrication

Structure Features

- Single seal
- Balanced
- Stationary seal
- Multiple springs
- Hard SSiC solid rotary face
- Cartridge design

Flush Applications

Normally use PLAN11, PLAN21

Materials

- Seal face :
CR501 : SSiC × SSiC
CR508 : SSiC × Carbon
- Metal parts : 304, 316
- Springs : 316, Hast-C4
- Seal ring : NBR, FKM, MVQ
- Seal gasket : PTFE