

U53系列

■适用工况

适用于低压力或低转数的腐蚀性介质

■结构特点

单端面结构

非平衡型设计

无旋向要求

多弹簧结构设计

凸耳传动形式

密封环安装简单，易于更换

PTFE材料辅助密封

“T₀”型结构环为静环标准配置，“T₇”型为选择配置

符合EN12756、ISO3069标准

■结构材料

摩擦副匹配

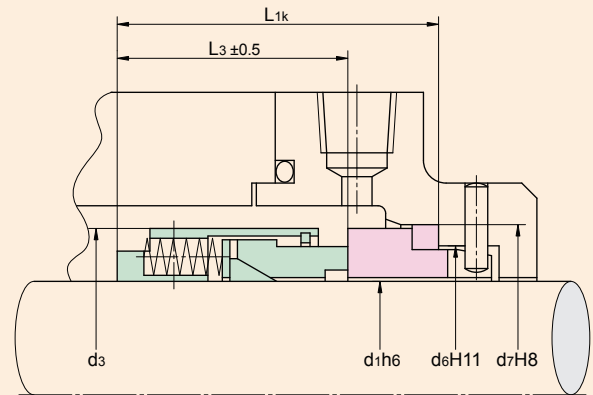
U530 : Carbon × SiC/WC

U531 : SiC × SiC

过流金属 : 304、316

弹簧 : 316、Hast-C4

密封圈 : PTFE



安装尺寸表

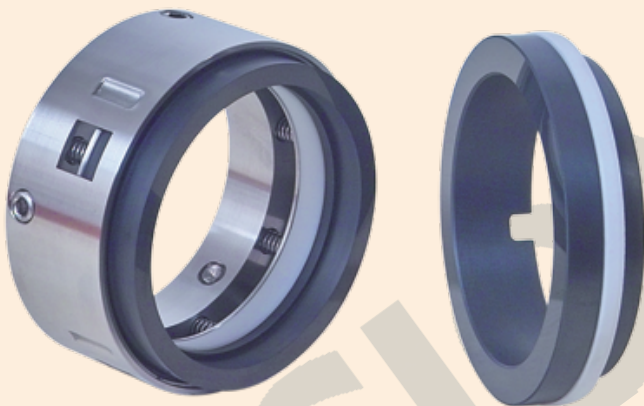
Size	d ₁	d ₃	d ₆	d ₇	L ₃	L _{1k}
014	14.0	24.0	21.0	25.0	23.0	35.0
016	16.0	26.0	23.0	27.0	23.0	35.0
018	18.0	32.0	27.0	33.0	24.0	37.5
020	20.0	34.0	29.0	35.0	24.0	37.5
022	22.0	36.0	31.0	37.0	24.0	37.5
024	24.0	38.0	33.0	39.0	26.7	40.0
025	25.0	39.0	34.0	40.0	27.0	40.0
028	28.0	42.0	37.0	43.0	30.0	42.5
030	30.0	44.0	39.0	45.0	30.5	42.5
032	32.0	46.0	42.0	48.0	30.5	42.5
033	33.0	47.0	42.0	48.0	30.5	42.5
035	35.0	49.0	44.0	50.0	30.5	42.5
038	38.0	54.0	49.0	56.0	32.0	45.0
040	40.0	56.0	51.0	58.0	32.0	45.0
043	43.0	59.0	54.0	61.0	32.0	45.0
045	45.0	61.0	56.0	63.0	32.0	45.0
048	48.0	64.0	59.0	66.0	32.0	45.0
050	50.0	66.0	62.0	70.0	34.0	47.5
053	53.0	69.0	65.0	73.0	34.0	47.5
055	55.0	71.0	67.0	75.0	34.0	47.5
058	58.0	78.0	70.0	78.0	39.0	52.5
060	60.0	80.0	72.0	80.0	39.0	52.5
063	63.0	83.0	75.0	83.0	39.0	52.5
065	65.0	85.0	77.0	85.0	39.0	52.5
068	68.0	88.0	81.0	90.0	39.0	52.5
070	70.0	90.0	83.0	92.0	45.5	60.0
075	75.0	95.0	88.0	97.0	45.5	60.0
080	80.0	104.0	95.0	105.0	45.0	60.0
085	85.0	109.0	100.0	110.0	45.0	60.0
090	90.0	114.0	105.0	115.0	50.0	65.0
095	95.0	119.0	110.0	120.0	50.0	65.0
100	100.0	124.0	115.0	125.0	50.0	65.0

运行参数 Operating Parameters

温度 Temperature : - 40 to + 240
(- 40 F to + 464 F)

压力 Pressure : to 15bar

速度 Speed : to 25m/s



Applications

Designed for corrosive media with low pressure and low revolution

Structure Features

Single seal

Unalanced

Independent of direction of rotation

Multiple springs

Lug driving

Sea face is easily installed and easy to replace

PTFE auxiliary seal material

“T₀” is standard seat, “T₇” is optional seat

In accordance with EN12756,ISO3069

Materials

Seal face :

U530 : Carbon × SiC/WC

U531 : SiC × SiC

Metal parts : 304,316

Springs : 316,Hast-C4

Seal ring : PTFE