

B50系列

■适用工况

适用于中等压力和转数工况，多用于密封石油、溶剂、水等介质

■结构特点

单端面结构

平衡型设计

无旋向要求

推进型密封

多弹簧结构设计

凸耳传动形式

密封环安装简单，易于更换

“T₀”型结构环为静环标准配置，“T₇”型为选择配置

符合EN12756、ISO3069标准

■结构材料

摩擦副匹配：

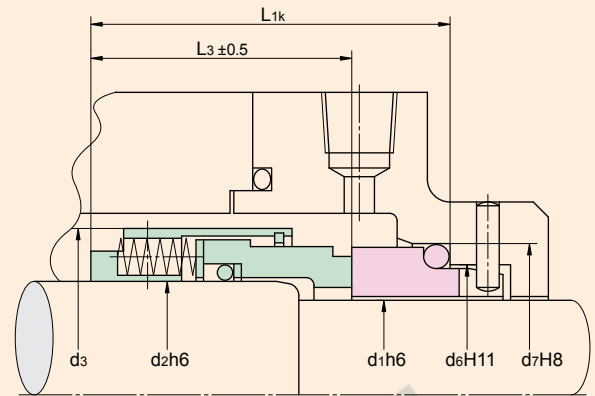
B500：Carbon × SiC/WC

B501：SiC × SiC

过流金属：304、316

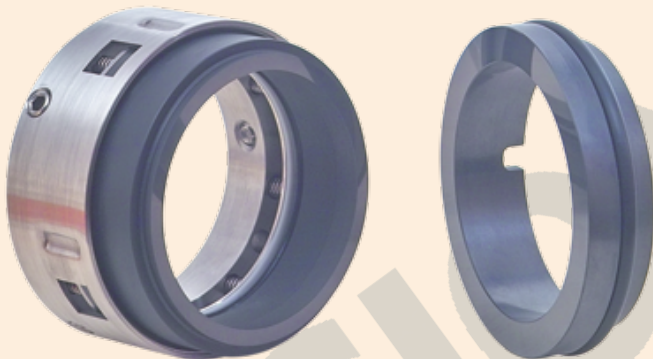
弹簧：316、Hast-C4

密封圈：NBR、FKM、EPDM、TEFLON、KALREZ®



安装尺寸表

	mm						
Size	d ₁	d ₂	d ₃	d ₆	d ₇	L ₃	L _{1k}
014	14.0	18.0	32.0	21.0	25.0	30.5	42.5
016	16.0	20.0	34.0	23.0	27.0	30.5	42.5
018	18.0	22.0	36.0	27.0	33.0	31.5	45.0
020	20.0	24.0	38.0	29.0	35.0	31.5	45.0
022	22.0	26.0	40.0	31.0	37.0	31.5	45.0
024	24.0	28.0	42.0	33.0	39.0	34.2	47.5
025	25.0	30.0	44.0	34.0	40.0	34.5	47.5
028	28.0	33.0	47.0	37.0	43.0	37.5	50.0
030	30.0	35.0	49.0	39.0	45.0	38.0	50.0
032	32.0	38.0	54.0	42.0	48.0	38.0	50.0
033	33.0	38.0	54.0	42.0	48.0	38.0	50.0
035	35.0	40.0	56.0	44.0	50.0	38.0	50.0
038	38.0	43.0	59.0	49.0	56.0	39.5	52.5
040	40.0	45.0	61.0	51.0	58.0	39.5	52.5
043	43.0	48.0	64.0	54.0	61.0	39.5	52.5
045	45.0	50.0	66.0	56.0	63.0	39.5	52.5
048	48.0	53.0	69.0	59.0	66.0	39.5	52.5
050	50.0	55.0	71.0	62.0	70.0	44.0	57.5
053	53.0	58.0	78.0	65.0	73.0	44.0	57.5
055	55.0	60.0	80.0	67.0	75.0	44.0	57.5
058	58.0	63.0	83.0	70.0	78.0	49.0	62.5
060	60.0	65.0	85.0	72.0	80.0	49.0	62.5
063	63.0	68.0	88.0	75.0	83.0	49.0	62.5
065	65.0	70.0	90.0	77.0	85.0	49.0	62.5
070	70.0	75.0	95.0	83.0	92.0	55.5	70.0
075	75.0	80.0	104.0	88.0	97.0	55.5	70.0
080	80.0	85.0	109.0	95.0	105.0	55.0	70.0
085	85.0	90.0	114.0	100.0	110.0	60.0	75.0
090	90.0	95.0	119.0	105.0	115.0	60.0	75.0
095	95.0	100.0	124.0	110.0	120.0	60.0	75.0
100	100.0	105.0	129.0	115.0	125.0	60.0	75.0



Applications

Designed for moderate pressure and revolution environment. Most are used for petroleum, solvent and water etc

Structure Features

Single seal

Balanced

Independent of direction of rotation

Pushing seal

Multiple springs

Lug driving

Seal face is easily installed and easy to replace

“T₀” is standard seat, “T₇” is optional seat

In accordance with EN12756, ISO3069

Materials

Seal face：

B500：Carbon × SiC/WC

B501：SiC × SiC

Metal parts：304, 316

Springs：316, Hast-C4

Seal ring：NBR, FKM, EPDM, TEFLON, KALREZ®

运行参数 Operating Parameters

温度 Temperature：-40 to +260
(-40 F to +500 F)

压力 Pressure：to 40bar

速度 Speed：to 25m/s