

U40系列

■适用工况

主要应用于密封浆类及高粘度介质

■结构特点

单端面结构

非平衡型设计

无旋向要求

圆柱螺旋单弹簧设计

弹簧具有较好的耐蚀性

适合较大的轴串量

旋转环径向开孔设计

拨叉扭矩传动形式

U401旋转环采用“O”型圈过渡密封联结方式

U402、U403旋转环采用镶装工艺

“To”型结构环为静环唯一配置

符合EN12756、ISO3069标准

■结构材料

摩擦副匹配：

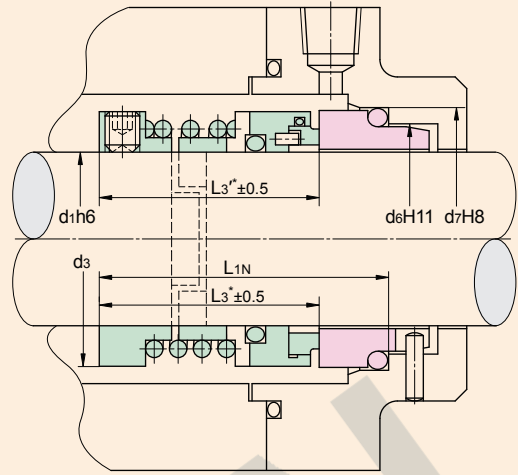
U401,U403：SiC/WC × SiC

U402：Carbon × SiC

过流金属：304、316

弹簧：316

密封圈：NBR、FKM

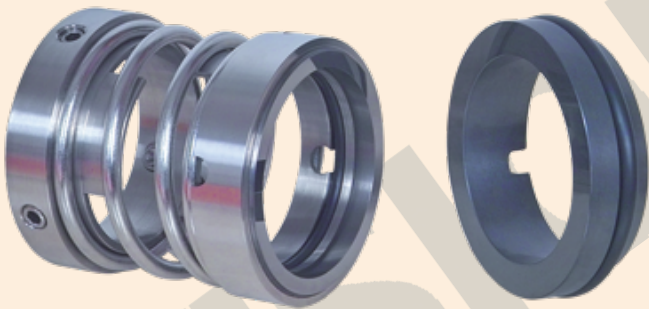


安装尺寸表

	mm						
Size	d ₁	d ₃	d ₆	d ₇	L ₃	L ₃ '	L _{1N}
020	20.0	34.0	29.0	35.0	31.5	41.0	45.0
025	25.0	39.0	34.0	40.0	37.0	43.0	50.0
030	30.0	44.0	39.0	45.0	38.0	45.0	50.0
035	35.0	49.0	44.0	50.0	43.0	49.0	55.0
040	40.0	56.0	51.0	58.0	42.0	55.0	55.0
045	45.0	61.0	56.0	63.0	47.0	55.0	60.0
050	50.0	66.0	62.0	70.0	46.5	60.0	60.0
055	55.0	71.0	67.0	75.0	56.5	61.0	70.0
060	60.0	80.0	72.0	80.0	56.5	63.0	70.0
065	65.0	85.0	77.0	85.0	66.5	67.0	80.0
070	70.0	90.0	83.0	92.0	65.5	68.0	80.0
075	75.0	99.0	88.0	97.0	65.5	72.0	80.0
080	80.0	104.0	95.0	105.0	75.0	72.0	90.0
085	85.0	109.0	100.0	110.0	75.0	77.0	90.0
090	90.0	114.0	105.0	115.0	75.0	77.0	90.0
095	95.0	119.0	110.0	120.0	75.0	82.0	90.0
100	100.0	124.0	115.0	125.0	75.0	82.0	90.0

* * * l₃为U402、U403的安装尺寸 l₃ is the installation dimension of U402,U403

* * * l₃'为U401的安装尺寸 l₃' is the installation dimension of U401



Applications

Designed for sealing slurry and high viscosity media

Structure Features

Single seal

Unbalanced

Independent of direction of rotation

Cylinder single spring

Spring has excellent corrosive resistance

Radial orifice design of rotary face

Fork-type torque driving

U401 rotary face adopts “O” ring as transition connection

U402 and U403 adopt shrink-fitted processing method.

“To” as only configuration of stationary seat

In accordance with EN12756,ISO3069

Materials

Seal face：

U401,U403：SiC/WC × SiC

U402：Carbon × SiC

Metal parts：304,316

Spring：316

Seal ring：NBR,FKM

运行参数 Operating Parameters

温度 Temperature：-20 to +180

(-4 ℉ to +356 ℉)

压力 Pressure：to 12bar

速度 Speed：to 15m/s